

IBM COGNOS CONTROLLER: MODULE 4 - DATA IMPORT

COURSE OVERVIEW:

This course will enable you to use the interface provided with Controller to import data from external sources. The course gives you plenty of time to practice and gain hands-on experience.

The aim of this one day course is to introduce the user to the Controller interface to import data from external sources. The course will go through a number of examples to show different techniques and best practice approaches to writing import specifications. This course is more technical than the other three basic modules. It therefore requires a good understanding of Controller and the concept of ASCII files.

Ideally, users will bring along output files from any system that they will want to import into their application. The idea is to use such files as exercises during the day.

COURSE OBJECTIVES:

- To understand the interface to load external data
- To understand the concept of lookup tables and how they are used within the system

WHO SHOULD ATTEND:

Users who will need to load data into the Controller system or maintain import specifications for other users. Trainees will have to understand what type of data needs to be loaded into the system, where it comes from and what format it can be supplied in.

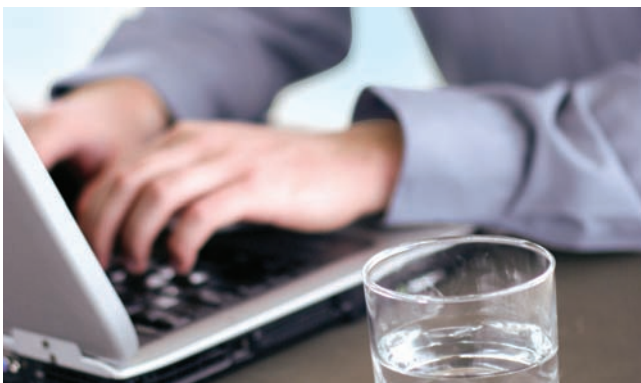
PREREQUISITES:

User who attend this course need to have attended the Module 1 course beforehand

NOTES: This course shows how to import external data by means of a variety of examples and exercises. Unless users bring their own data files, the examples might be very different from what users will have to import.

LENGTH: One day

LOCATION: Inca Academy or Customer Site



COURSE OUTLINE: IBM COGNOS CONTROLLER MODULE 4 - DATA IMPORT

- External data
 - File formats
 - Ways to produce files
- Import specifications
 - Fields, variables and operation templates
 - Mandatory and optional fields
- Lookup tables
 - Where and how can they be used
 - Set up and maintenance
- Security on import specifications and lookup tables

- Importing files
 - The import run
 - The import queue
 - The log report
- Tips and Tricks
 - Best practice for names and codes
 - Commenting your import specifications

HELP TEXT AND INCA SUPPORT

- Online Help, Additional documentation in Controller and Inca Support Services

