

IBM COGNOS FRAMEWORK MANAGER (BASICS)

COURSE OVERVIEW

This course will enable you to understand the fundamentals of the IBM Cognos BI Framework Modelling while working through a series of lessons and exercises.

Over the 3 days of the course you will gain an understanding of data sources, how to model your data to best suit reporting needs and how to apply security to your data.

This knowledge will prove invaluable when building and maintaining framework models for your organisations reporting environment

COURSE OBJECTIVES

- Understand how the Framework model fits into the overall IBM Cognos 8 BI Solution
- To learn how to use IBM Cognos Framework Manager to create a user friendly interface to your organisation data
- Understand data traps and how to overcome them when designing effective data models.

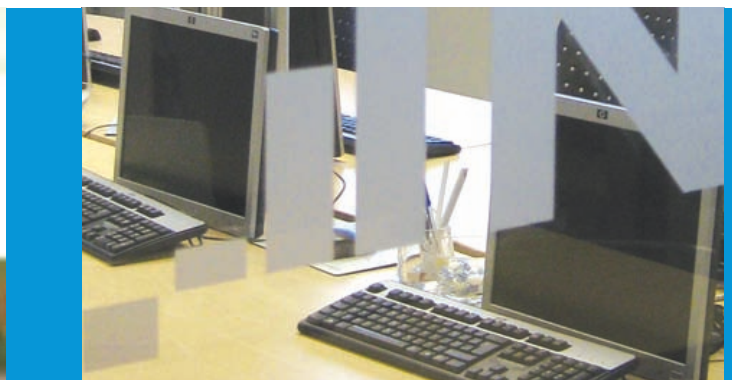
WHO SHOULD ATTEND:

Developers who are responsible for building and maintaining the IBM Cognos BI reporting environment

LENGTH: Three days

COURSE CODE: BIFM3

LOCATION: Inca Academy



COURSE OUTLINE: IBM COGNOS FRAMEWORK MANAGER (BASICS)

LESSON 1: INTRODUCTION AND DATA SOURCES

- Starting with IBM Cognos Framework Manager

LESSON 2: IBM COGNOS FRAMEWORK MANAGER OVERVIEW

- The Interface
- Icons and Objects

LESSON 3: A FRAMEWORK MANAGER PROJECT

- Data Types, Aggregation and Properties
- Creating a New Project
- Using the Metadata Wizard
- File Structure
- Using the Log File

LESSON 4: MODELLING YOUR DATA

- Namespaces
- Data, Model and Stored Procedure Query Subjects
- Defining relationships
- Star Schema Modelling
- Merging Query Subjects
- Database Schema Diagram

LESSON 5: PACKAGES AND TOOLS

- Available Tools
- Governors
- Creating a Package

LESSON 6: FILTERS AND PROMPTS

- Understanding Filters
- Creating Embedded Filters
- Creating Prompts
- YTD Calculations

LESSON 7: DETERMINANTS AND DIMENSIONS

- Understanding Granularity
- Creating and Usage of Determinants
- Creating Multiple Fact Tables

LESSON 8: DIMENSIONALLY MODELLED RELATIONAL DATA (DMR)

- DMR vs OLAP Cubes
- Regular and Measure Dimensions
- Creating Dimensions and Hierarchies
- Creating Fact Tables

LESSON 9: SECURITY

- Adding Data Security
- Adding Object Security
- Using Macros to apply security

LESSON 10: PARAMETER MAPS

- Creating and Using Parameter Maps

Summary